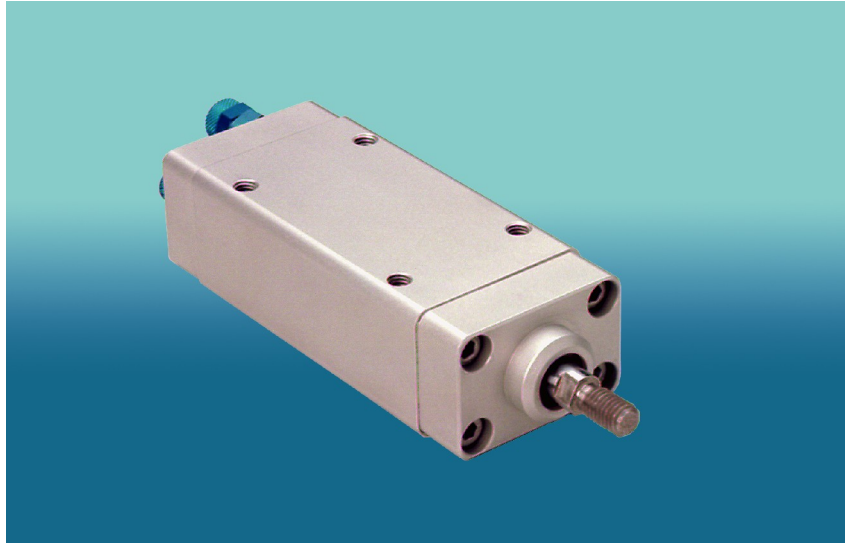


Pneumatic cylinder

Type K

Double-acting
Pneumatic
Cylinder

Ø 10/16/20
25/32/40 mm



Type K is a pneumatic cylinder in compact design. The two air connections are located on the front side (face).

Technical data:

Type	10 - K	16 - K	20 - K	25 - K	32 - K	40 - K
Design type	Piston cylinder					
Stroke length [mm]	10, 25, 50, 80, 100					
Fitting position	Any					
Adm. temperature range [°C]	-10 to +70					
Medium	Filtered, oiled or non-oiled compressed-air (min. fineness 40 µm)					
Compressed-air supply	Front					
Compressed-air [bar]	min. 2 ... max. 6					
Materials	Base body, mounting plate, cover: Al Piston rod: Ck 45 SL f7 Piston: NBR (Ø10: Ms 58) Seals: NBR, cylinder barrel: Ms 63					
This cylinder type may only be stressed in working direction. Vertical and lateral forces must be excluded.						

Weights: (gramme)

Stroke length [mm]	Piston - Ø [mm]					
	10	16	20	25	32	40
10	95		245		650	850
25	120				750	
50						
80		385	485			1400
100	215	425	525	775	1250	1550

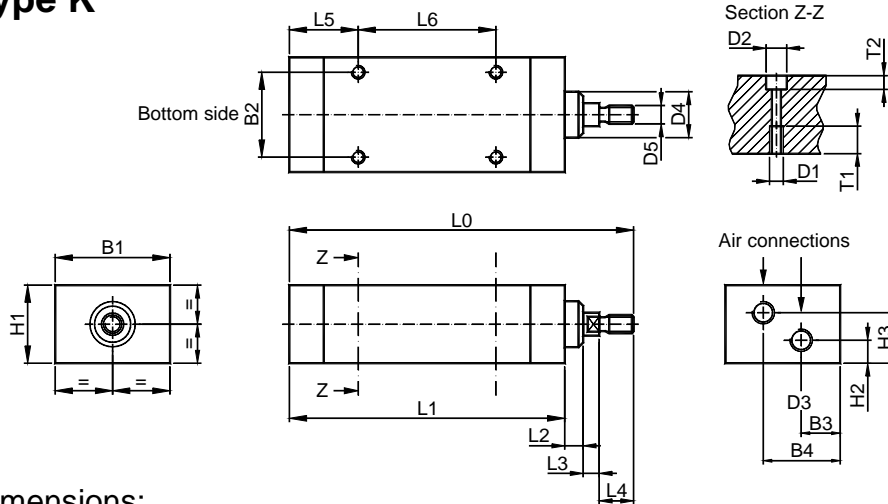
Pneumatic cylinder

Delivery time on request

TOSS[®]

Pneumatic cylinder

Type K



Dimensions:

Piston ∅ [mm]	Piston rod ∅ [mm]	B1 [mm]	B2 [mm]	B3 [mm]	B4 [mm]	D1 [mm]	D2 [mm]	D3 [mm]	D4 [mm]	D5 [mm]	H1 [mm]	H2 [mm]	H3 [mm]	T1 [mm]	T2 [mm]	L2 [mm]	L3 [mm]
10	5	25	18	6,2	16	M4	-	M5	-	M5	18	5,4	13	durchgehend	-	-	10
16	8	38	26	15	23	M5	∅8	M5	17	M6	24	6	17	10	5	8	8
20	8	42	30	15,25	25,5	M5	∅8	M5	20	M6	27	6	18	10	5	8	8
25	10	50	37	18	33,5	M6	∅9	G1/8	22	M8	34	9	22	12	6	8	7
32	12	62	45	20,5	39	M8	∅11	G1/8	24	M10 x 1,25	42	11,8	29,3	16	7	12	8
40	15	70	54	23	44,5	M8	∅11	G1/4	28	M12 x 1,25	48	12,0	33,5	16	7	12	8

Piston - ∅ [mm]		Stroke length [mm]				
		10	25	50	80	100
10	L0	90	105	130	160	180
	L1	69	84	109	139	159
	L4	11	11	11	11	11
	L5	27	27	27	27	27
	L6	15	30	55	85	105
16/20	L0	100	115	140	170	190
	L1	69	84	109	139	159
	L4	15	15	15	15	15
	L5	27	27	27	27	27
	L6	15	30	55	85	105
25	L0	110	125	150	180	200
	L1	80	95	120	150	170
	L4	15	15	15	15	15
	L5	30	30	30	30	30
	L6	20	35	60	90	110
32	L0	125	140	165	195	215
	L1	85	100	125	155	175
	L4	20	20	20	20	20
	L5	32,5	32,5	32,5	32,5	32,5
	L6	20	35	60	90	110
40	L0	130	145	170	200	220
	L1	90	105	130	160	180
	L4	20	20	20	20	20
	L5	35	35	35	35	35
	L6	20	35	60	90	110