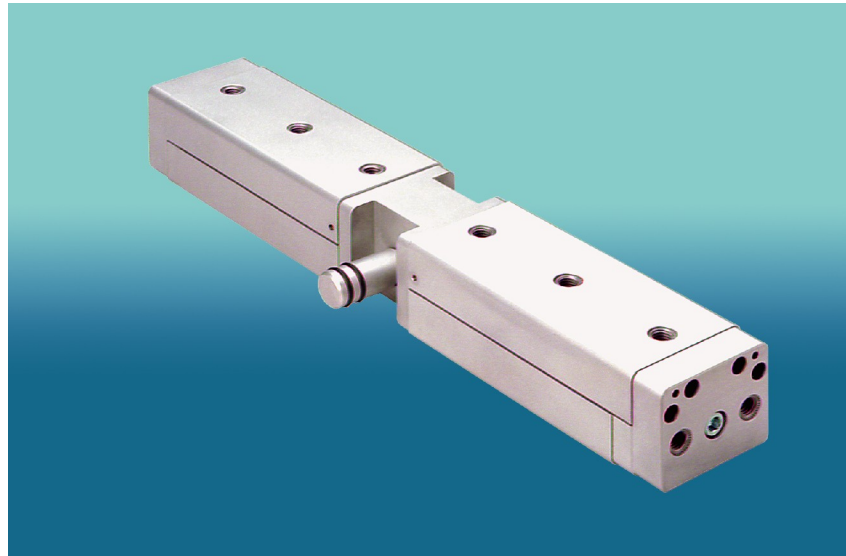


## Type SEB

Linear Ball Slide

Design size  
25/40



Manual actuator unit for symmetrical positioning.

### Technical data:

Type	25 - SEB	40 - SEB
Design type	Linear ball guide	
Positioning distance [mm]	10, 25, 50, 80, 100, 125 (each 2 x)	
Pitch of threaded spindle	1,5	
Spindle dimensions	M10	
Adm. temperature range [°C]	-10 to +70	
Mounting position	Any	
Materials	Base body, upper part, gear case, cover, plates, turning handle: Al Protecting tube: MS 63; tube nut, spindle nut: Ms 58 Threaded spindles: VA; bevel gears: ETG 100	

### Weights: (gramme)

Size	Positioning distance [mm]					
	2 x 10	2 x 25	2 x 50	2 x 80	2 x 100	2 x 125
25		1560	1960	2560		
40					5020	

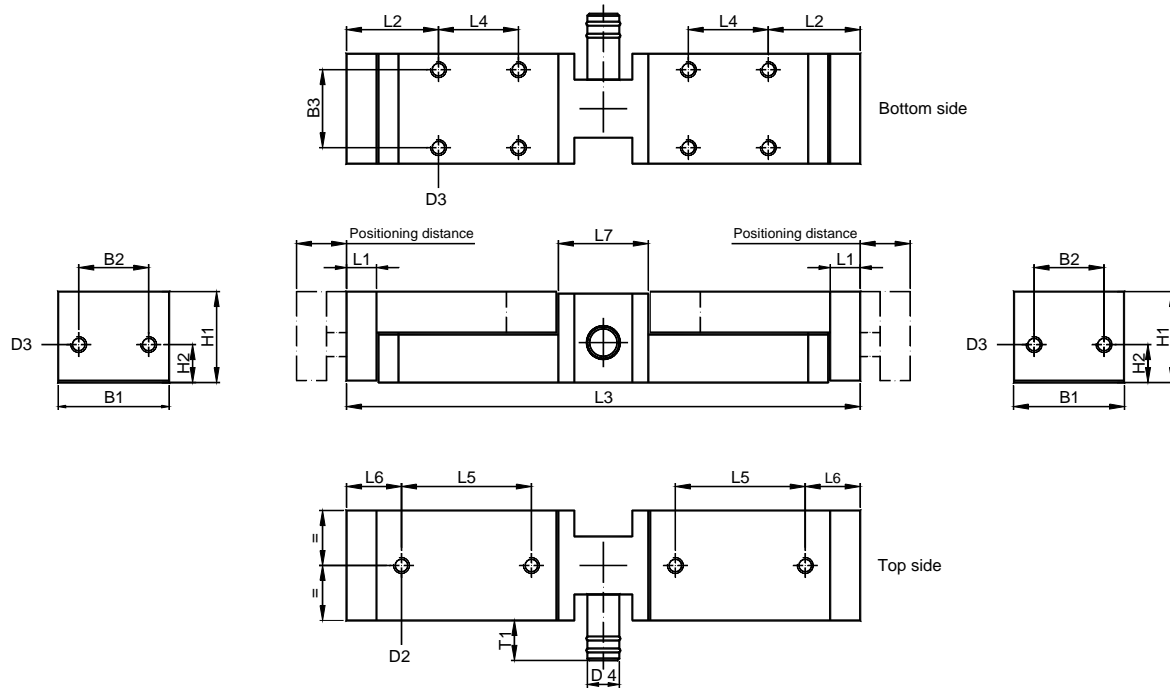
Admissible loads see pneumatic cylinder type B, pages 1.2.1.3 to 1.2.1.5.

Delivery time on request

# Actuators



## Type SEB



### Dimensions:

Size	B1 [mm]	B2 [mm]	B3 [mm]	D1/depth [mm]	D2/depth [mm]	D3/depth [mm]	D4 [mm]	H1 [mm]	H2 [mm]	T1 [mm]	L1 [mm]	L2 [mm]	L7 [mm]
25	55,5	35	39	M8/7,5	M8/16	M8/10,5	16	45,5	19,5	22	15	46	45
40	70,5	50	54	M8/10,5	M8/18	M8/10,5	32	65	27	22	20	51	55

Size	Positioning distance [mm]						
	10	25	50	80	100	125	
25	L3	217	257	327	437	507	587
	L4	20	40	75	130	2 x 82,5	2 x 102,5
	L5	45	65	2 x 50	2 x 78	2 x 95	3 x 77
	L6	27,5	27,5	27,5	27,0	27,5	27,0
40	L3	237	277	347	457	527	607
	L4	20	40	75	130	2 x 82,5	2 x 102,5
	L5	45	65	2 x 50	2 x 78	2 x 95	3 x 77
	L6	32,5	32,5	32,5	32,0	32,5	32,0