

Recirculating-ball unit

TOSS[®]

Type MF

Mini unit

Ball - Ø
3/4/5/8 mm



The body is equipped with steel balls - separated from each other by damping elements made of plastic - to improve smoothness of running. It is suitable for low and medium loads.

Technical data:

| Type | MF - 3 | MF - 4 | MF - 5 | MF - 8 |
|--------------------------------------|--|--------|--------|--------|
| Design type | Recirculating-ball unit | | | |
| Ball - Ø [mm] | 3 | 4 | 5 | 8 |
| Adm. temperature range [°C] | -10 bis +70 | | | |
| Mounting position | Any | | | |
| Load F [N] | 240 | 360 | 455 | 1050 |
| Weight [gramme] | 20 | 60 | 130 | 360 |
| Materials | Body: Al Support: St, hardened and ground Distance / damping elements: plastic | | | |
| Regular lubrication required. | | | | |

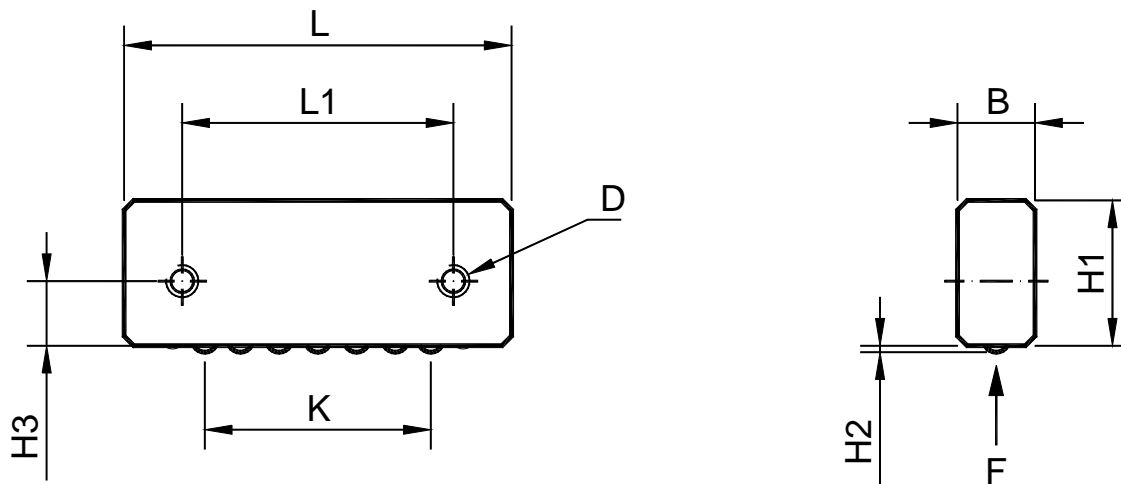
Delivery time on request

Recirculating-ball unit



Mini unit

Type MF



Dimensions:

| Type | Length L [mm] | Width B [mm] | Height H1 [mm] | Fastening bores | | | Guide length K [mm] | Ball projection H2 [mm] |
|---------------|------------------|-----------------|-------------------|-----------------|------------|----------|---------------------------|-------------------------------|
| | | | | L1 [mm] | H3 [mm] | Thread D | | |
| MF - 3 | 50 | 10 | 17,5 | 35 | 7,5 | M 4 | 30 | 0,5 |
| MF - 4 | 60 | 12 | 22,5 | 42 | 10 | M 5 | 35 | 1,0 |
| MF - 5 | 80 | 16 | 31 | 55 | 13,8 | M 6 | 45 | 1,2 |
| MF - 8 | 120 | 20 | 43 | 82 | 18 | M 8 | 70 | 2,0 |

Minimum screw-down depth of the fastening screws: 75% of B
 Alternative to thread D: Available with the bore sizes $\varnothing 4^{H7}$, $\varnothing 5^{H7}$, $\varnothing 6^{H7}$ or. $\varnothing 8^{H7}$.