

Recirculating-ball unit

TOSS[®]

Type MF

Mini unit

Ball - \varnothing
3/4/5/8 mm



The body is equipped with steel balls - separated from each other by damping elements made of plastic - to improve smoothness of running. It is suitable for low and medium loads.

Technical data:

Type	MF - 3	MF - 4	MF - 5	MF - 8
Design type	Recirculating-ball unit			
Ball - \varnothing [mm]	3	4	5	8
Adm. temperature range [°C]	-10 to +70			
Mounting position	Any			
Load F [N]	240	360	455	1050
Weight [gramme]	20	60	130	360
Materials	Body: Al Support: St, hardened and ground Distance / damping elements: plastic			
Regular lubrication required.				

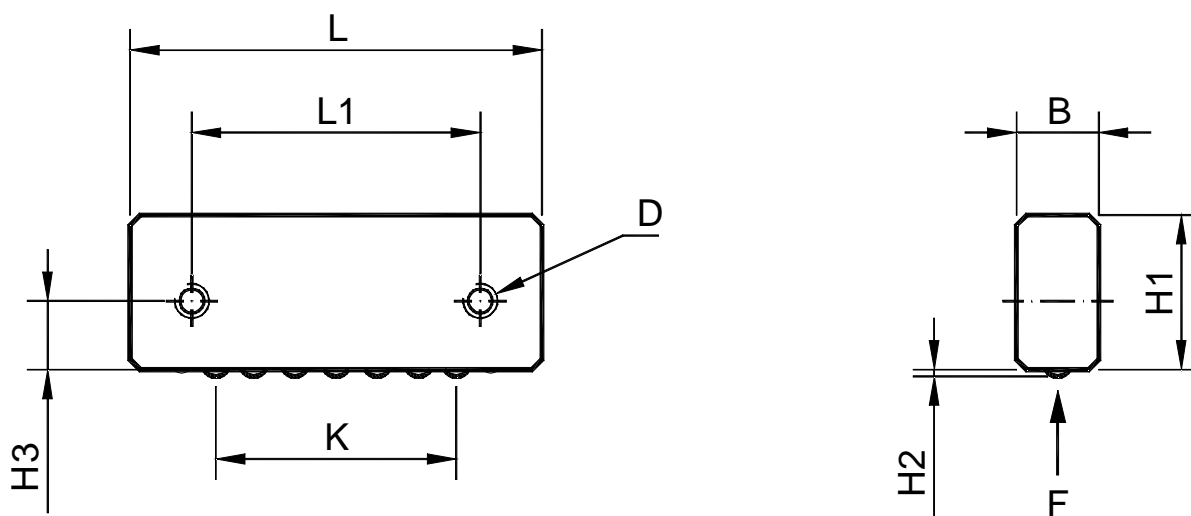
Delivery time on request

Recirculating-ball unit

TOSS[®]

Mini unit

Type MF



Dimensions:

Type	Length L [mm]	Width B [mm]	Height H1 [mm]	Fastening bores			Guide length K [mm]	Ball projection H2 [mm]
				L1 [mm]	H3 [mm]	Thread D		
MF - 3	50	10	17,5	35	7,5	M 4	30	0,5
MF - 4	60	12	22,5	42	10	M 5	35	1,0
MF - 5	80	16	31	55	13,8	M 6	45	1,2
MF - 8	120	20	43	82	18	M 8	70	2,0

Minimum screw-down depth of the fastening screws: 75% of B

Alternative to thread D: Available with the bore sizes $\varnothing 4^{H7}$, $\varnothing 5^{H7}$, $\varnothing 6^{H7}$ or $\varnothing 8^{H7}$.

www.pneumaticballslide.com